

**BOOTH 452-457  
HITACHI**

» The Hitachi WH18DBDL2 1/4-inch Hex Brushless Triple Hammer impact driver provides an innovative solution to keep the job site even more productive. By incorporating a third anvil (Triple Hammer), as opposed to the standard two-anvil system, the WH18DBDL2 is able to achieve a higher torque, more beats per minute and faster screwing speed while also reducing the vibration an impact driver can generate.

[www.hitachipowertools.com](http://www.hitachipowertools.com)

**BOOTH 1628  
GROVE PRODUCTS**

» Grove Products' new 3/16-by-3-by-4-inch horseshoe shim is constructed of rugged, injection-molded high-impact polystyrene proven to withstand up to 88,750 pounds of compressive force. These solid shims are perfect for applications including masonry, precast and tilt-up concrete while costing less than corrodible metal shims.

[www.groveproductsinc.com](http://www.groveproductsinc.com)

**BOOTH 1234-1236  
CS UNITEC**

» The AutoMAB 350 compact drill is the ideal hole-cutting machine for steel fabricators, contractors and plant maintenance professionals. The drill features automatic feed in both forward and reverse and uses annular cutters to cut holes up to 1 1/2-inches in diameter. The drill is lightweight at 33 pounds and features ergonomic controls for one-handed operation.

[www.csunitec.com](http://www.csunitec.com)



**GO TO** » Get fresh New Products every day at  
[www.ContractorsSupplyMagazine.com](http://www.ContractorsSupplyMagazine.com)

**BOOTH 1127-1129  
NILFISK INDUSTRIAL VACUUMS**

» Nilfisk is showing new wet/dry vacuums at STAFDA. The new Nilfisk ATTIX 33 and 44 models feature a redesigned InfiniClean filter cleaning system with an upgraded suction unit for cleaning and collection in rugged environments. InfiniClean automatic filtration technology features a powerful reversed air pulse, activated every 15 seconds to keep airflow at a high level, while a double-valve system minimizes performance drops during the cleaning cycle. Both models feature an upstream main filter, upstream HEPA filter, a motor cooling air filter and four dust bag options for a complete filtration system.

[www.nilfiskindustrialvacuums.com](http://www.nilfiskindustrialvacuums.com)

**BOOTH 842  
SIMA/NATIONAL  
EQUIPMENT WHOLESAL**

» The SIMA CX-20 rebar cutter features electric-over-hydraulic operation with 110 volts at 11.3 amps. It cuts up #6 (3/4-inch) grade 60 rebar. SIMA cutter blocks are made from Tenasteel, a high-resistant, steel-chrome alloy specially selected for this application. With a harder HRC hardness (+-56), the user can enjoy approximately 5,000 cuts per set of cutter blocks.

[www.nationalequip-us.com](http://www.nationalequip-us.com)

**BOOTH 1726-1728  
ALL MATERIAL HANDLING**

» AMH announces the X5 series, a new premium lever chain hoist that is one of the lightest and most compact units in the market. AMH stands apart from competitors with its quality control and test procedures at the factory, which is followed by repeat inspection and testing, as every X5 hoist is final-assembled in the USA. The X5 is offered in 3/4-, 1 1/8-, 1 3/4-, 3 1/2-, 7- and 10-U.S.-ton capacities.

[www.allmaterialhandling.com](http://www.allmaterialhandling.com)

**BOOTH 711-713  
RADIANS**

» Radians is aggressively expanding its hand protection line with six new cut protection gloves with ANSI cut level ratings of A2 to A5. The new cut protection line includes various gauges, including 13-, 15- and 18-gauge, Kevlar Lycra, nitrile and latex palm coatings, and thermal plastic rubber overlays.

[www.radians.com](http://www.radians.com)

**BOOTH 955  
JVCKENWOOD USA**

» The Kenwood ProTalk digital NX-240V16P VHF and NX-340U16P UHF portable features 20 percent more coverage than analog radios for superior coverage in difficult environments with concrete, steel and multiple stories. Kenwood units feature durable, military-grade construction and enhanced audio to ensure you're heard even in loud environments. It operates in both FM analog and NXDN digital and has a scrambler in analog or encryption in digital for greater security.

[www.us.jvckenwood.com](http://www.us.jvckenwood.com)

**BOOTH 846-848  
UNITED ABRASIVES/SAIT**

» The Ultimate Grind wheel from United Abrasives/SAIT is the latest addition to the company's Premium Performance product line. The 1/4-inch grinding wheel has a proprietary grain and bond system offering high-performance grinding for metal and stainless applications. It is made in the USA.

[www.unitedabrasives.com](http://www.unitedabrasives.com)

**BOOTH 563  
KRAFT TOOL**

» Kraft Tool's patented cork handle is designed for improved functionality and reduced user fatigue. Slightly curved with a wider back, the handle fits the hand naturally for a comfortable grip while the natural moisture-absorbent properties of cork keep the handle feeling dry. It is offered on Kraft Elite Series Five Star finishing trowels and the new Elite Series Xtreme Flex finishing trowel and Mag hand float.

[www.krafttool.com](http://www.krafttool.com)



**BOOTH 1307-1313**  
**SENCO**

» Senco's expanded fastener line now includes composite staples and nails for customers requiring blade-friendly, non-rusting, metal-free fasteners. Made with a blend of polymer resin and fiberglass, composite fasteners are beneficial for various applications in the woodworking, industrial, lumber tagging, timber processing and millwork industries.

[www.senco.com](http://www.senco.com)



**BOOTH 1006-1013**  
**MAKITA TOOLS**

» Makita's 18V X2 LXT (36V) Lithium-Ion brushless reciprocating saw kit is powered by two 18V Lithium-Ion batteries for 36-volt power and has an electronically-controlled BL brushless motor that matches torque and rpm to the application for freedom from the cord, even for demanding applications like cutting and demolition.

[www.makitatools.com](http://www.makitatools.com)

**BOOTH 1846-1848**  
**POWERNAIL**

» Powernail introduces the model 2000F Pneumatic Trigger-Pull nailer. A redesigned Flex Foot needs only a single adjustment to handle varying wood thicknesses, while its unique nose fits today's wide variety of profiles. Its compact size allows use close to walls and in tight spaces. Use with Powernail's HD PowerCleats to install flooring with HDF/MDF core, engineered, laminate and exotic woods.

[www.powernail.com](http://www.powernail.com)



**Pullman Ermator**



**DUST COLLECTION SYSTEMS FOR ALL INDUSTRIES**

**PULLMAN ERMATOR IS THE LEADING INNOVATOR IN THE COMMERCIAL & INDUSTRIAL HEPA VACUUM MARKET**

- ▶ Through innovative design, our complete line of HEPA vacuums and extractors, are the only ones that increase productivity, save money and increase workers safety
- ▶ **JET PULSE** filter cleaning that works unlike automatic systems that don't
- ▶ The **INVENTORS** of the **LONGOPAC** system for vacuums. Eliminates the need to dump dust from a can.
- ▶ No doors to open to clean out filters that expose workers to dust
- ▶ Highest CFM and Waterlift in their class make Pullman Ermator the only choice for **GRINDING, CUTTING, CORING, BLASTING, DEMOLITION**, and all other industries that create harmful dust

**STOP BUYING YOUR VACUUMS FROM GRINDER COMPANIES & CALL TODAY!**  
**855.736.2869 | [www.ermatorusa.com](http://www.ermatorusa.com)**



**T8600 BEST PROPANE ON THE MARKET**



**S26 HEPA MODELS FOR CONCRETE AND MASONRY**



**T18000 HEPA VAC IS THE MOST POWERFUL**

## STAFDA's ANNUAL CONVENTION & TRADE SHOW

# CONTACT THE TRUE SPORT

STEP UP YOUR GAME

## MAKE CONTACT

**DISTRIBUTORS, MANUFACTURERS, REPS, LEADING TECHNOLOGY AND ENDORSED SERVICE PROVIDERS, ALONG WITH INDUSTRY CONSULTANTS**



**NOVEMBER 6-8, 2016**

**GEORGIA WORLD CONGRESS CENTER**

*You must be a member to attend!*

### HIGHLIGHTS INCLUDE:

**STAFDA'S GENERAL SESSION** features Herm Edwards and Jimmy Johnson discussing teamwork & leadership.

**A TRADE SHOW** spotlighting new products from STAFDA manufacturers, show-only specials & pricing, plus prize drawings.

**AN OPENING PARTY** filling the College Football Hall of Fame.

**EDUCATIONAL WORKSHOPS** showcase top business experts discussing the issues challenging members.

View the full agenda and membership information at [www.stafda.org](http://www.stafda.org)

**800-352-2981**


**BOOTH 1112  
KS INTERNATIONAL**

» Following the success of its original surface protection product, Clean&Safe, KS International has added a new product to its lineup to better serve the needs of remodelers and general contractors. Like the original Clean&Safe, Clean&Safe Pro is absorbent, leak-proof, skid-resistant and reusable, but it offers an extra level of protection to address particular issues common in the building industry.

[www.dropcloth.com](http://www.dropcloth.com)


**BOOTH 235-237  
METABO**

» Metabo is pleased to introduce the new 18V cordless 2 1/2-inch hand held band saw. Keeping with Metabo's commitment to safety, the MBS 18LTX 2.5 is the only cordless band saw that comes standard with a "safety break" that stops the blade in under a second, as well as a full blade guard to protect users from blade slippage or from coming in contact with the cutting teeth. The MBS 18 LTX 2.5 is perfectly suited for quickly and easily cold-cutting small-diameter metal and plastic pipes, conduit, threaded rod, angle iron and channel.

[www.metabousa.com](http://www.metabousa.com)

**BOOTH 734-745  
DEWALT**

» DeWalt's new 20V MAX XR brushless Versa-Clutch adjustable torque screwgun (DCF622), features the Versa-Clutch system, which dials in the proper torque needed to drive fasteners. For metal-to-metal fastening and commercial roofing and framing, it boasts high power (0 to 2,000 rpm), sufficient to drive heavy-duty fasteners into metal and wood.

[www.dewalt.com](http://www.dewalt.com)


**BOOTH 1738  
ALFA TOOLS**

» Alfa Tools has added to its successful cutting tool line to include industrial quality tungsten carbide-tipped core cutters designed for rotary hammer drills with SDS-Max and spline-drive systems. These core cutter bits are suitable for aggressive large-diameter breakthrough drilling in concrete, masonry, stone, brick and aggregates. The large three-spiral flute design creates clean, round holes at fast drilling speeds that work best in deep drilling applications; which ultimately means less vibration for the end-user.

[www.alfatools.com](http://www.alfatools.com)


**BOOTH 824-828  
UNION TOOLS/RAZOR-BACK**

» Razor-Back Professional Tools' fiberglass striking tools have end-user driven improvements in safety, durability and ergonomics head-to-handle connection, handle breakage and handle grip control. Their patent-pending Safe-Lock technology uses a steel-anchored connection between the fiberglass handle and head and their three-layer overstrike protection and baseball-bat-style handles offer nonslip control.

[www.razor-back.com](http://www.razor-back.com)

**BOOTH 1006-1012  
MAKITA TOOLS**

» The Makita 18V X2 LX Lithium-ion (36V) brushless cordless 1/2-gallon HEPA filter backpack dry vacuum eliminates extension cords and bridges the gap between low-capacity on-board dust extraction systems and larger capacity but less portable wheeled canister job site vacuums.

[www.makitatools.com](http://www.makitatools.com)


**BOOTH 1943  
TREND ROUTING TECHNOLOGY**

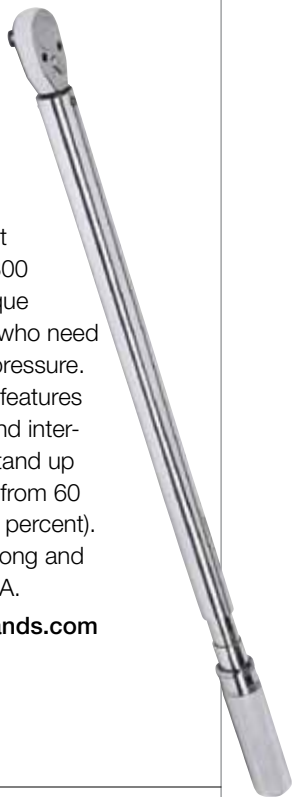
» Trend's new foot-operated, hands-free door and board lifter allows up-and-down and side-to-side movement for easy positioning and fixing of doors, panels and plasterboard. Made of durable steel, it rotates 360 degrees and can lift doors and panels 2 3/8 inches thick and up to 165 pounds.

[www.trend-usa.com](http://www.trend-usa.com)


**BOOTH 318-320  
SNAP-ON INDUSTRIAL**

» Snap-on Industrial's latest torque tool, the Brutus 3R300 heavy duty mechanical torque wrench, is perfect for pros who need a tool that can handle the pressure. This 1/2-inch drive wrench features a thicker main tube, cam and internal components that can stand up to high torque applications from 60 to 300 foot-pounds (+/- six percent). It measures 32 1/2 inches long and is proudly made in the U.S.A.

[www.snaponindustrialbrands.com](http://www.snaponindustrialbrands.com)



## THE BETTER BUNGEE™

**SAFER, STRONGER, BETTER.**

*Bungee cords, straps, rope and custom kits.*



PO Box 310, Old Zionsville, PA 18068  
610-360-1032 info@TheBetterBungee.com  
[TheBetterBungee.com](http://TheBetterBungee.com)

**PUMA**  
AIR CENTER

WE MANUFACTURE  
FULL LINE OF CONTRACTOR COMPRESSORS



**Puma Industries, INC.**

1992 Airways Blvd Memphis, TN 38114  
901-744-7979 / [sales@pumaaircenter.com](mailto:sales@pumaaircenter.com)  
[www.pumaairusa.com](http://www.pumaairusa.com)


**BOOTH 335-337  
PEARL ABRASIVE**

» The new Pearl P5s SD Gold turbo blade offers incredibly fast cutting on hard pavers, concrete and granite. The blade features a large, 8mm diamond rim with high diamond concentration to offer extra long blade life and a waved core design, which adds stability, reduces friction and directs debris from the cutting path.

[www.pearlabrasive.com](http://www.pearlabrasive.com)

**BOOTH 1411-1413  
PUMA INDUSTRIES**

» Puma's model WE1504C 1.5-hp single-stage direct drive oil-less air compressor features quiet operation (only 70 dBA), heavy-duty pumps and induction motor which operate at a low 1,750 rpm, and two 10-inch wheels for easy portability. The WE1504C can be operated in a horizontal or vertical position and comes with a removable hose reel that can be easily mounted or dismounted from the top of the unit.

[www.pumaairusa.com](http://www.pumaairusa.com)


**BOOTH 1046-1048  
SHOPVAC CORPORATION**

» The new Shop-Air line of products includes air movers, air cleaners, portable and wall-mount air circulators and direct-and belt-drive drum fans. Air movers range from 200 to 1,800 cfm. The Air cleaner models filter airborne particles in workshops, basements or garages. The stainless steel Air circulator models come in 11, 14 and 16 inches can be used anywhere you need to circulate air in a large area.

[www.shopvac.com](http://www.shopvac.com)


**BOOTH 534-539  
GRIP-RITE**

» Grip-Rite is proud to introduce its completely redesigned model GRTRN45 pneumatic roofing nailer. This tool was developed to compete with the industry leaders on speed, balance and power while including a few special features of its own. With its air-in/air-out fastener feed and improved safety design, this tool is a workhorse specifically built to work under extreme conditions, even after tar build-up.

[www.grip-rite.com](http://www.grip-rite.com)


**BOOTH 208  
ESTWING PNEUMATIC TOOLS**

» Long revered for its hand tools, Estwing has partnered with Prime Global Products to release its first line of air tools and accessories. The initial product line includes two framing nailers, two flooring nailers, a mini palm nailer, and a 50-foot air hose. The model EFR3490 34-degree framing nailer has a lightweight magnesium body, a select fire trigger, integrated rafter hook, an anti-dry-fire mechanism, a no-mar tip and adjustable depth-of-fire. Other air tools, compressors and accessories will be released in the future.

[www.primeglobalproducts.com/estwing](http://www.primeglobalproducts.com/estwing)


**BOOTH 1753-1755  
WALRAVEN**

» Walraven introduces the W1000 strut clamp/conduit clamp, the newest member of the W Series strut clamp family. With a one-piece design (no loose parts or bags), the W1000's unique design allows for one clamp to fit pipe of multiple sizes, meaning fewer items to stock.

[www.walraven.com](http://www.walraven.com)

**BOOTH 1424  
FLEXOVIT USA**

» Flexovit introduces RazorCombo wheels for right-angle grinders. Developed for applications that would normally require multiple abrasive products, RazorCombo thin combination wheels have a special reinforcement configuration that allows you to safely cut, deburr, notch and light grind — all with only one wheel, saving time and money.

[www.flexovitabrasives.com](http://www.flexovitabrasives.com)


**BOOTH 226  
MAGNOLIA BRUSH**

» Magnolia Brush is excited to introduce the new high-visibility street broom, the Visi-Sweep. The Visi-Sweep is manufactured using high-visibility poly bristles and is designed for use by emergency services, highway crews, airport crews and on other job sites where high visibility is a must.

[www.magnoliabrush.com](http://www.magnoliabrush.com)

# The Original.

FEIN developed the first electric drill in 1897 and the first Multi-Tool in 1967. Now the future is here, with the **STARLOCK** mounting system of FEIN MultiMaster tools & accessories.

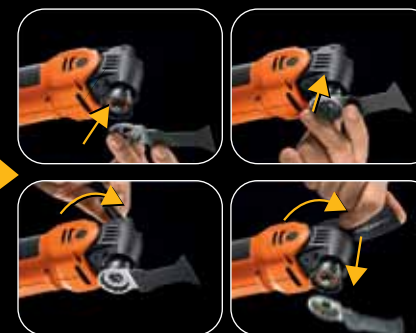
- ▶ lowest vibration in the industry
- ▶ up to 50% more power
- ▶ tool-less accessory change in 3 seconds
- ▶ largest & highest quality accessory range
- ▶ trusted by professionals
- ▶ available in corded & cordless

**MADE IN GERMANY**

Simply snap in and **GO!**

**3 Second change!**

Simply flip to release!



Das Original

FEIN OSCILLATING

With STARLOCK



FEIN. Unverwüstliche Elektrowerkzeuge.



[feinus.com](http://feinus.com)


**BOOTH 1323-1325  
SKILSAW**

» The Skilsaw 7 1/4-inch Sidewinder for fiber cement is available with a Diablo fiber cement blade (SPT67FMD-22) or a Skilsaw blade (SPT-67FMD-01) and features a unique dust collection system. The tool includes a blade guard extension and dust channel that funnels dust into the included vacuum hose, where it's then collected in a job site vacuum. The saw's no-mar cord and hose sleeve keeps these items protected from the cutting surface and makes handling the tool more convenient so users can focus on the job at hand.

[www.skilsaw.com](http://www.skilsaw.com)


**BOOTH 211-213  
FEIN POWER TOOLS**

» The four-speed Fein ASCM 12 C cordless screw gun is the only 12-volt drill/driver on the market with a four-speed gearbox. It delivers the highest motor output in its class: and reaches speeds of up to 2,500 rpm with its brushless FEIN PowerDrive motor. The FEIN ASCM 12 accepts drill bits up to 1/2 inch in diameter.

[www.feinus.com](http://www.feinus.com)


**BOOTH 645  
SOLO INCORPORATED**

» The 404-V compression sprayer from Solo was designed for construction and building pros with all-Viton seals for extended use with bleach and other harsh chemicals. It has a pressure-relief valve and ergonomically designed carrying handle with trigger lock-on feature.

[www.solousa.com](http://www.solousa.com)


**BOOTH 834-836  
L.B. WHITE**

» The propane-fueled Tradesman 125 portable forced-air heater features a steel combustion chamber and burner plate for utmost durability. A continuous electronic spark ignition system assures lighting under adverse conditions.

[www.lbwhite.com](http://www.lbwhite.com)


**BOOTH 927-929  
GATEWAY SAFETY**

» Gateway Safety expands its popular StarLite family with a new foam-lined, anti-fog eyewear solution: StarLite Foam-Pro. These safety glasses are lined with a soft, closed-cell foam to prevent dust and debris from getting into the eyes. StarLite FoamPro features new OptiFit foam technology, a revolutionary, tapered foam designed to provide a more tailored fit and an improved seal around the eyes.

[www.gatewayafety.com](http://www.gatewayafety.com)


**BOOTH 1334-1337  
SIMPSON STRONG TIE**

» Simpson Strong-Tie now offers the Speed Clean DXS, a comprehensive drill bit and vacuum system that contains dust while producing precise, clean holes for adhesive anchor installations. The Speed Clean DXS drills up to 20 percent faster than standard drill bits in low-strength concrete, saves time by eliminating the "blow-brush-blow hole" cleaning process and reduces health risks from airborne silica dust exposure caused by the hole-drilling process.

[www.strongtie.com/sdwsframing](http://www.strongtie.com/sdwsframing)


**BOOTH 149  
THE BETTER BUNGEE**

» The Better Bungee's new light-weight, industrial-strength urethane bungee cords, straps and tie downs are made in the USA of a proprietary material that is so strong that it will not degrade, break or become brittle even under extreme temperatures, exposure to UV, water, gasoline, diesel fuel, oil or household chemicals. They carry a lifetime warranty.

[www.thebetterbungee.com](http://www.thebetterbungee.com)


**BOOTH 1023  
SOUTHWIRE TOOLS & EQUIPMENT**

» Southwire introduces a new line of fish tapes that feature a spiral-extruded polymer design that reduces the amount of effort required to push or pull the tape through EMT and PVC conduit. Unlike fiberglass, Southwire's SIMpull fish tapes are kink-resistant and virtually unbreakable. The new line includes nine models that offer solutions for a multitude of applications.

[www.southwiretools.com](http://www.southwiretools.com)

**GO TO** Get fresh New Products every day at [www.ContractorsSupplyMagazine.com](http://www.ContractorsSupplyMagazine.com)



**THE BEST  
GOES UNNOTICED.**

*JENNY. HIDDEN IN PLAIN SIGHT SINCE 1927.*

An air compressor is basically a utility. Like electricity, the only time people notice it is when it's not working. Since 1927, Jenny products have been making a living going unnoticed. Made in the USA of the highest quality materials, our compressors are the most reliable on the market.

Sure, we'd love to get more credit. But as long as we continue to be ignored, then we know our customers are getting exactly what they want — a compressor that just keeps working. *Isn't it time a Jenny was hiding on your jobsite?*

[www.jennyproductsinc.com](http://www.jennyproductsinc.com)

Visit Jenny at STAFDA  
booths 1427-1429.

**Jenny**

THE FIRST NAME IN COMPRESSORS



**BOOTH 1026-1028  
SUMNER MANUFACTURING**

» The new Max Jax2 can handle pipe from four to 36 inches and boasts a load capacity of two metric tons. The Max Jax2 is loaded with extras, like four drop-slot roller wheel heads, which offer more wheel contact with the pipe. It also comes with five caster wheels with brakes, making it easy to move pipe around. The wheels can also be removed, turning the Max Jax2 into a hi- or lo-jack. [www.sumner.com](http://www.sumner.com)

**BOOTH 345  
WEEGO**

» The Weego Jump Starter 44 is easy to use, safe, reliable and provides enough power to start a 6.4-liter gas engine. It can also charge phones, tablets, laptops and other USB devices. The Weego 44 is packed with new-and-improved features, including an ergonomic design, onboard flashlight and intuitive functionality. [www.myweego.com](http://www.myweego.com)



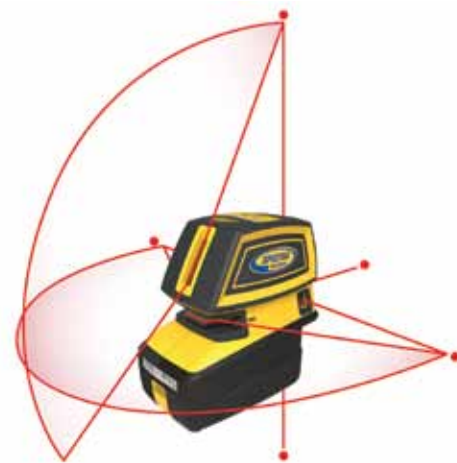
**BOOTH 1322-1324  
BOSCH TOOLS**

» The Bosch PS82 12V Max EC brushless 3/8-inch impact wrench offers an optimized impact system for efficient impact force and a square drive anvil. It has an LED light ring to illuminate the work area and a battery gauge indicator for easier charge monitoring. The PS82 produces 85 foot-pounds of torque and weighs just 2.2 pounds. Its Bosch EC brushless motor and all-metal gearbox ensure no scheduled maintenance, long life and outstanding power efficiency. In addition, its Bosch-exclusive Durashield housing is a tough, flexible exterior that withstands the toughest job site conditions. [www.boschtools.com](http://www.boschtools.com)



**BOOTH 218-220  
SURFACE SHIELDS**

» Surface Shields' new Plasti Shield floor and wall protector is now available in a flame-retardant option, adding further safety and protection to job sites. This corrugated plastic material is extremely light, simple to cut and impact resistant. The fire-rated option was tested to meet flame retardant industry standards. Plasti Shield is 100 percent recyclable. [www.surfaceshields.com](http://www.surfaceshields.com)



**BOOTH 944-946  
TRIMBLE/SPECTRA PRECISION**

» Trimble has added the new Spectra Precision LT52 point and crossline laser to its industry-leading line of laser products. The LT52 combines a five-beam laser pointer with a horizontal and vertical crossline laser, yielding a versatile laser all construction pros can rely on. Its features include automatic self-leveling, visible points up to 200 feet away and a tough housing that can withstand a three-foot drop. [www.spectralasers.com](http://www.spectralasers.com)



## NEW 2017

**MH540T TANK TOP HEATER**

- OPERATES ON A 360° RADIUS OR TILTED TO 180°
- 3 HEAT SETTINGS: 29,000, 36,000, 48,000 BTU'S

# HEATSTAR



**FORCED AIR KEROSENE**  
50,000-210,000 BTU



**HEAVY-DUTY INDIRECT FIRED**  
100,000-400,000 BTU



**FORCED AIR PROPANE**  
35,000-400,000 BTU



**NOMAD BOX HEATERS**  
190,000-260,000 BTU



**HEAVY-DUTY DIRECT FIRED**  
350,000-600,000 BTU



**CONVECTION**  
60,000 BTU (NG)  
80,000-200,000 BTU (LP)



**PORTABLE RADIANT**  
35,000 BTU (LP)  
125,000 BTU (LP/NG)



**OIL-FIRED RADIANT**  
115,000-155,000 BTU

## DEWALT® JOB-SITE HEATERS

### GUARANTEED TOUGH.™



**HEAVY DUTY ELECTRIC**  
1.65-20KW



**FORCED AIR PROPANE**  
40,000-210,000 BTU



**PROPANE RADIANT**  
45,000 BTU



**FORCED AIR KEROSENE**  
50,000-215,000 BTU


**BOOTH 710-712  
HEATSTAR**

» The HS115IR infrared radiant construction heater from Heatstar by Enerco produces 115,000 BTU. This oil-fired radiant heater transfers heat similar to the sun's rays even in high wind and wintry conditions. The stainless steel combustion chamber produces a very quiet, low odor, smokeless, dust-free, working environment, making it ideal for directing heat toward curing concrete. The HS115IR has a 17-gallon fuel tank and a single-point bail lift frame.  
[www.heatstarbyenerco.com](http://www.heatstarbyenerco.com)

**BOOTH 1639  
KETT TOOL**

» Kett Tool introduces the P-2080 Scissor Shear, a lightweight shear featuring a straight-handled body design for maximum maneuverability when making cuts in thick, soft materials. At only 12.25 inches long and weighing only four pounds, these shears offer an outstanding combination of lightweight design and cutting performance — the P-2080 requires only a 90-psi air source and achieves speeds from 0 to 2500 rpm.  
[www.kett-tool.com](http://www.kett-tool.com)


**BOOTH 1740  
H.D. HUDSON**

» The Hudson Constructo Extreme Curing Compound Sprayer is a 3.5-gallon galvanized steel sprayer designed to spray thicker solvent-based cures and sealers with Viton Extreme seals for added resistance to harsh chemicals. It features heavy-duty brass shut-off, spray wand and fittings for long life, a funnel top for quick, no-spill filling and heavy duty-steel clips that hold the wand when not in use.  
[www.hdHUDSON.com](http://www.hdHUDSON.com)


**BOOTH 1712  
PRIMARYSOURCE**

» New this year from PrimarySource is an increased focus on Duracell batteries, which will help industrial customers get a share of the \$4.4 billion battery business. Powered by innovation, Duracell is committed to winning market share through superior products, a \$175 million marketing program and in-store activations. Displays, catalogs, customized sell sheets and other premiums are also available.  
[www.prysource.com](http://www.prysource.com)


**BOOTH 1719-1721  
KLEIN TOOLS**

» Klein Tools' new line of multi-bit screwdrivers and exclusive multi-nut drivers increase productivity and save space in a tool belt or bag. The line includes two multi-nut drivers, a 15-in-1 multi-bit screwdriver, two 6-in-1 ratcheting stubby screwdrivers and a 4-in-1 electronics screwdriver.  
[www.kleintools.com](http://www.kleintools.com)



## It does the job... So I can do mine

The new generation of Nilfisk **ATTIX 33 & 44** dust extractors with their unique InfiniClean™ fully automatic filter cleaning systems are designed to keep you safe from fine and potentially hazardous dust without taking your mind off the job.

Buying  
Specials!  
**STAFDA**  
Booth 1127



**Nilfisk**

Visit [www.NilfiskVacuum.com](http://www.NilfiskVacuum.com) to learn more



**BOOTH 1634-1636**  
**RIDGID**

» The RIDGID StrapLock Pipe Handle simplifies the installation and maintenance of large-diameter plastic pipe by helping achieve a secure grip and apply force in all directions. The Pipe Handle features rapid size adjustment to quickly move between pipe sizes and a specialized strap that provides maximum grip while minimizing marring. It is compatible with pipe from three to eight inches in diameter.

[www.ridgid.com/pipehandle](http://www.ridgid.com/pipehandle)

**BOOTH 1319**  
**SKILSAW**

» It's coming! Until now, users had to create work-arounds to cut and score concrete by modifying a worm drive saw, and results were less than ideal. Powered by the legendary Skilsaw worm drive power train, MEDUSAW is a comprehensive all new seven-inch concrete cutting system that enables the user to cut accurately while managing dust.

[www.skilsaw.com](http://www.skilsaw.com)



**BOOTH 353-355**  
**GREENLEE**

» Greenlee's K05-SYNCRO crimping tool improves the dimensional accuracy of crimps by ensuring crimping dies match with each rotation of the dial. The newly added SYNCRO feature greatly improves the die selection process, reducing die setup time by 50 percent and eliminates crimping errors from mismatched dies. Die size is indicated using color coding on the dies and a lug size indicator on the dial.

[www.greenlee.com](http://www.greenlee.com)



**BOOTH 548**  
**BOSSE TOOLS**

» Pros in manual labor know the back muscles experience more strain and stress than any part of the body — simply lifting a 25-pound item puts 700 pounds of force on the back. Bosse Tools has responded to this issue with its line of ergonomic shovels that not only increase productivity, but also decrease job site injury by minimizing twisting and torquing while using the shovel.

[www.bossetools.com](http://www.bossetools.com)



**BOOTH 1106-1110**  
**LACKMOND PRODUCTS**

» The new Beast Pro Turbo Mesh Porcelain Tile Blade incorporates the most advanced technology available. It is designed with a unique rim that aids in cooling the blade, resulting in longer blade life and clean, fast cutting, and is engineered with a thin-kerf cutting edge to minimize chipping. Ideal for use in the hardest porcelain tiles, and also performs well in softer ceramic or natural stone tiles.

[www.lackmond.com](http://www.lackmond.com)



**BOOTH 1247-1249**  
**INTERCORP**

» Intercorp's Strong Point construction fasteners are IBC and IRC approved for use in building construction. The ICC-ES has examined Intercorp's product information, test reports, calculations, quality control methods and other factors to ensure they are code-compliant.

[www.intercorpusa.com](http://www.intercorpusa.com)



**BOOTH 1734-1736**  
**ERB SAFETY**

» ERB's One Nation program comes with a small footprint display including mirror and 60 pair of safety eyewear — six pairs each of 10 safety sunglass styles: Contra, Boas Xtreme, Ella, Exile, Ammo Sport, TX3, Outride, Live Free, Breakout. All eyewear meets ANSI Z87.1 requirements for impact and are packaged retail ready and tagged with MSRP.

[www.e-erb.com](http://www.e-erb.com)

**BOOTH 809-811**  
**KÄRCHER**

» The VersaGRIP Trigger Gun upgrades any gas pressure washer to tackle the most challenging cleaning jobs. Dual-action triggers provide multiple ways to spray so you can work at any angle and clean hard to reach spots.

[www.karcher.com/us](http://www.karcher.com/us)



*Martin*

Tools  
Always in Stock  
Ready to Ship

*Manufacturing Quality Hand Tools Since 1917*



- Complete Line of Industrial Hand Tools
- High Quality American Made Steel
- More than 90 Years Experience
- No Minimums
- Best Freight Rates in the Business
- 21 Stocking Factory Locations in North America



Visit *Martin* at the  
STAFDA Show  
Nov 7-8, 2015,  
Atlanta, GA  
Booth # 1139



Check Out Our  
New Website

[www.martinsprocket.com](http://www.martinsprocket.com)  
817-258-3000

*Made with USA Steel  
Manufactured in USA*



**BOOTH 552  
REED INSTRUMENTS**

» The versatile 3-in-1 in Reed R5500 Circuit Breaker Finder features a circuit breaker finder to quickly identify which receptacles are tied to their respective breaker, a receptacle tester to ensure proper outlet wiring and a GFCI tester to ensure outlets protected by a ground fault are functioning properly. All Reed Instruments come with a standard one-year manufacturer's warranty and are backed by a repair and calibration facility in Wilmington, North Carolina.

[www.reedinstruments.com](http://www.reedinstruments.com)

**BOOTH 1126-1128  
BARTELL INNOVATECH**

» The Predator P1800 high-performance 18-inch three-head planetary grinder is designed and manufactured by Innovatech Products, so you can be assured of reliability, stability and fast production rates. With their incredible balance, ease of use, wide range of tooling options and unmatched production capabilities, Predator grinders are the right choice for polishing or grinding cement, concrete, natural stone, marble, granite, terrazzo and more.

[www.bartellglobal.com](http://www.bartellglobal.com)


**BOOTH 635-637  
GRABBER**

» A companion to the industry-acclaimed PanelMax ST48 and FT30, the PanelMax CM10 creates perfect cuts and corners on interior gypsum that require no bead, tape or mud. Developed specifically for on-site convenience, this compact and portable machine continues to advance Grabber's leadership in construction technology.

[www.grabberman.com](http://www.grabberman.com)


**BOOTH 1825  
CONTINENTAL ABRASIVES**

» Continental Abrasives' Ulticut cutting and grinding wheels are made with Shieldtech aluminum oxide grain, which provides increased life, cooler cutting and grinding and a better finish than other "high-performance" products. Shieldtech armor increases the overall strength and hardness of the grains, making them perfect for both non-ferrous and ferrous metal like stainless steel.

[www.continentalabrasives.com](http://www.continentalabrasives.com)


**BOOTH 1006-1013  
MAKITA TOOLS**

» Makita created a new class in cordless with 18V LXT Sub-Compact Brushless tools. Makita Sub-Compact tools are the most compact and lightest weight in the 18-volt category, so users get 12-volt handling with the compatibility of the world's largest 18-volt cordless tool system. For more efficient fastening, the impact driver features Assist Mode (A-mode) which helps eliminate "screw cam-out" and "cross threading" by driving at low speed until tightening begins.

[www.makitatools.com](http://www.makitatools.com)


**BOOTH 653  
IPG/INTERTAPE POLYMER GROUP**

» ALF Mastic Foil Tape is a 17-mil, low-VOC, aluminum foil pressure-sensitive mastic sealant tape for indoor and outdoor use. It provides an instant water resistant grip to most surfaces required in HVAC applications and performs well within a wide temperature range. It will not crack and is hand-tearable.

[www.itape.com](http://www.itape.com)

**BOOTH 1152  
ASPHALT ANCHOR GROUP**

» The Asphalt Anchor Group's BoltHold SP family of anchors is designed for mounting structures to asphalt surfaces. The anchors are offered in three sizes, with the SP10-38 being the most popular. The AK-4 kit comprises four SP10-38 anchors and two EPX2 grout bags. The SP10-38 anchor is six inches long, and 5/8 inches in diameter.

[www.asphalt-anchors.com](http://www.asphalt-anchors.com)


**BOOTH 1434-1436  
PREBENA**

» Prebena is expanding its wood frame construction program with the rail adapter SlideFix 4C. Connecting Prebena pneumatic staplers to guide rails means they can be guided straight, quickly and safely, which reduces workload and time on the job. The SlideFix 4C can be applied in conjunction with rail systems from leading manufacturers, and can also be installed on the pneumatic stapler.

[www.prebena.de](http://www.prebena.de)

# MURO

## The Professional Way To Drive Screws

Key benefits of our industry-leading Auto-Feed Screw Driving Systems:

- » Complete the job in a fraction of the time.
- » Helps you stay competitive.
- » Flexibility to be used for multiple applications.
- » Ergonomically friendly.
- » Work standing up.
- » Telescopic handle adjusts to your height.
- » Unit stands up when not in use.

# MURO

Ensure your location is stocked today.  
Call us at 1.800.665.6876



[muro.com/sup](http://muro.com/sup)  
Muro North America




**BOOTH 962-964  
LEDLENSER**

» Ledlenser is pleased to debut the Industrial Series, or iSeries of flashlights and headlamps designed for industrial and craft professions. The line includes the i6R, a penlight that recharges via USB connection; the i7 DBL, which boasts a double charging base; the i9R, which charges in a quarter of the time; and the iXEO 19R headlamp (shown).

[www.ledlenser.com](http://www.ledlenser.com)

**BOOTH 1652-1654  
WOOD INDUSTRIES**

» Wood Industries' new Eagle Silent Series compressors claim to be the quietest compressors in the industry specifically designed for professional contractors. There are seven different styles and sizes of the hand carry/portable silent compressors in the family, starting with a one-gallon unit (shown) up to a 20-gallon with ranges from 1 to 6 cfm. Wood's Eagle Silent Series compressor line was awarded a Retailer's Choice Award at the 2016 National Hardware Show.

[www.eaglecompressor.com](http://www.eaglecompressor.com)


**BOOTH 1238  
SCODD INDUSTRIES**

» The PorcelainPlus Speedbit from Scodd industries was specifically designed for drilling through hard surfaces including porcelain tile, granite, marble, quartz, glass and ceramic tile. It features a specially formulated carbide spear tip with four-point cross-step design for greater durability and speed, making installations quicker and easier, and therefore more profitable. The Speedbit average 25 seconds per hole with more than five holes per bit (based on PEI 4 porcelain tile).

[www.porcelaindrillbit.com](http://www.porcelaindrillbit.com)


**BOOTH 152-154  
DYNAMIC SAFETY**

» Dynamic Safety has launched a complete line of Roofer's Kits with many options and economical pricing, especially in pallet-load quantities. These complete fall-arrest systems are available in four options: harnesses with mating buckle leg attachments or tongue and buckle leg attachments; 25 or 50 feet of rope; single-use or reusable roof anchors; or a choice of a manual rope grab or a trailing rope grab.

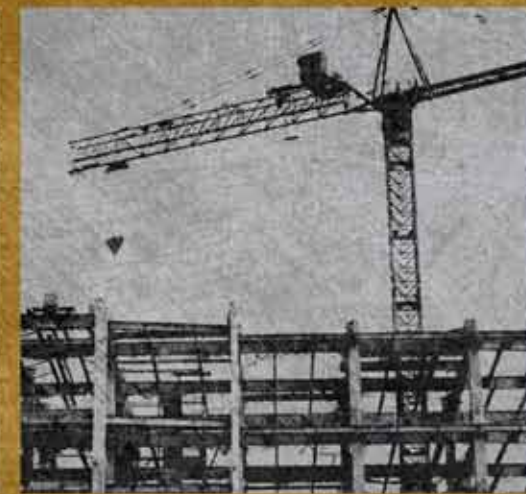
[www.dynamicsafetyusa.com](http://www.dynamicsafetyusa.com)


**BOOTH 727-729  
PROTO INDUSTRIAL**

» Proto's innovative SkyHook safety transfer system keeps tools safe with active control during transfer from hand to hand or person to person. The SkyHook only needs a short lanyard to connect to the wrist so there is less risk of interference in close-range work. A range of SkyDock attachments expand the system's versatility.

[www.protoindustrial.com](http://www.protoindustrial.com)

# FROM MINING TO HIGH STEEL. WE DO THAT.



**GearWrench has the solutions.**

Solutions like our wide line of impact sockets, universals, and extensions made to take on any harsh industrial environment.

GearWrench Industrial Hand Tools ...

GearWrench Strong and Guaranteed for Life.

*GearWrench Impacts  
and Extensions*

**GEARWRENCH**  
INDUSTRIAL HAND TOOLS

**GEARWRENCH.COM**



#### BOOTH 1644-1646 JPW/JET INDUSTRIES

» JET Tools' new single- and two-stage 60 and 80 gallon (shown) oil-lubricated vertical air compressors are assembled in the U.S. They feature cast iron pumps, ASME-certified tanks and industrial-rated NEMA motors for dependable, long-lasting service. Each compressor has a built-in safety valve, high-pressure switch and a fully enclosed metal belt guard. The 80-gallon model JCP-803 has a 7.5-hp, 230V single-phase, 31-amp motor that delivers 25.1 cfm at 90 psi.

[www.jettools.com](http://www.jettools.com)

#### BOOTH 319-325 ROLAIR

» ROLAIR's AB5 "Air Buddy" is the much anticipated follow-up to the popular JC10. This 1/2-hp compressor delivers .7 CFM at 90 psi, all while weighing a modest 25 pounds. Its long-life induction motor features manual overload protection, and the manifold includes a regulator, gauges and a 1/4-inch universal quick-disconnect.

[www.rolair.com](http://www.rolair.com)



#### BOOTH 544 PACTOOL INTERNATIONAL

» Installing panel siding can be a tedious job. Pactool wants to change that with the Z-Clamp, which makes installing panel siding easier, faster and safer — it even makes one-person installation a reality. Working as a pair, each Z-CLAMP grips tightly to Z flashing, creating a stable platform to support each panel while nailing. It also automatically creates the proper siding-to-flashing gap to allow moisture drainage.

[www.pactool.us](http://www.pactool.us)



#### BOOTH 1744 WEILER CORPORATION

» Weiler, a leading provider of abrasives, power brushes, and maintenance products for surface conditioning, announces the launch of its full line of Tiger bonded abrasives. The line includes cutting, grinding and combo wheels available in high-performance, performance and value tiers, allowing users to prioritize between long life, fast cut or both, depending on the application.

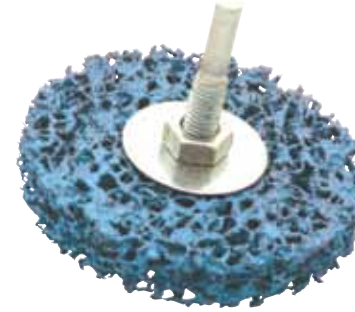
[www.weilercorp.com](http://www.weilercorp.com)



#### BOOTH 1106-1110 LACKMOND

» Beast carbide-tipped drill bits by Lackmond are German-made and provide solutions for drilling some of the hardest, most rebar-filled concrete in the construction world. Whether the need is for drilling small diameter holes using an SDS-Plus shank or larger diameter holes with deeper embedment using SDS-Max or spline shank, the Beast has it. All Beast carbide drill bits meet ANSI standards and come with a two- or four-claw carbide tip.

[www.lackmond.com](http://www.lackmond.com)



#### BOOTH 1243 GEMTEX ABRASIVES

» Gemtex expands its non-woven, silicon-carbide Strip Away disc line for surface cleaning and rust, paint and adhesive removal. The open-coat design quickly cleans the surface without damaging the parent metal. It can be used wet or dry on stone, marble, terrazo and granite and is offered in three grades.

[www.gemtexabrasives.com](http://www.gemtexabrasives.com)

#### BOOTH 1847-1849 PIP/PROTECTIVE INDUSTRIAL PRODUCTS

» PIP adds the new Ranger Style to its JSP HardCap A1+ Bump Cap line. It model has a protective HDPE liner and a three-inch brim to protect the face, neck and ears from UV rays. An adjustable chin strap provides a secure fit, a terry cloth sweatband adds comfort and reflective piping enhances visibility.

[www.pipusa.com](http://www.pipusa.com)



#### BOOTH 1655 LOGISTICS SUPPLY

» CoverMax surface protection from Logistics helps keep worksites clean and damage free by protecting from liquids as well as impact. While other surface protectants absorb spills, CoverMax keeps liquids on top so you can wipe them up and reuse the covering another day. It also offers two times more impact resistance than other leading brands.

[www.logisticssupply.com](http://www.logisticssupply.com)

# PROFESSIONAL TOOLS...DIFFERENTLY.

## OX<sup>®</sup>

UNLEASH THE POWER



STAFDA 40th Annual  
Convention & Trade Show  
Georgia World Congress Center  
Atlanta, GA - Nov 6-8, 2016

VISIT BOOTH#  
135-137, HALLS A1-A2

CONTACT US: E: [sales@oxtools.com](mailto:sales@oxtools.com) T: 888-850-6710 [www.oxtools.com](http://www.oxtools.com)



**BOOTH 452-457  
HITACHI POWER TOOLS**

» Hitachi's newest Finish Combo Kit, the KNT50AB, features a new model EC710S 6-gallon, 150-max-psi pancake air compressor with a 1-hp oil-free motor and Hitachi's popular 18-gauge, 2-inch model NT50AE2 brad nailer along with a 25-foot hybrid hose, safety glasses and pneumatic oil. It operates at just 73 dBA.

[www.hitachipowertools.com](http://www.hitachipowertools.com)



**BOOTH 1446-1448  
ROCKWELL**

» Rockwell's newest iteration of its popular Sonicrafter is the model F80 Duotech Oscillation Sonicrafter, the first oscillating tool that offers the option of two oscillating angles, 3.4 and 5.0 degrees. Users now have the option of selecting the 5.0-degree oscillating angle for faster, more aggressive cuts with quicker results or 3.4 degrees for continuous control.

[www.rockwelltools.com](http://www.rockwelltools.com)

**BOOTH 801-803  
TRIMACO**

» Trimaco's patent-pending E-Z Up Dust Containment Pole works with plastic sheeting to create a dust barrier without tape. The E-Z Up Pole features a twist-lock design and a quick clip for easy setup. To use, simply clip the plastic onto the quick clip and adjust the pole to the ceiling height. Available in 12-, 16- and 20-foot heights. Each pack contains two poles.

[www.trimaco.com](http://www.trimaco.com)



## HITCH2BENCH™ TECHNOLOGY



**MOUNTS TO  
YOUR TRUCK  
FITS STANDARD  
2" HITCH**

**MOUNTS TO  
YOUR BENCH  
MOUNTING BRACKET  
INCLUDED**

**YOUR TRUCK JUST GOT ONE HELL OF AN UPGRADE**

**SEE IT IN ACTION AT  
WILTONTOOLS.COM**

**WOOD'S POWR-GRIP**  
**WPG.com** the original & trusted name in vacuum lifting equipment

**put a handle where you need it!**

Since 1964, Wood's Powr-Grip has provided innovative equipment which uses vacuum to lift, hold, and position nonporous materials, including glass, plastics, sheet metal, stone slabs, and appliances. We offer a broad range of hand-held vacuum cups, vacuum mounting cups and below-the-hook vacuum lifters to make materials handling easier. Whether your application requires standard or custom designs, let us put our expertise to work for you!

[WPG.com](http://WPG.com) 800-548-7341

**"THE ORIGINAL"**  
**SPEEDY SHARP**  
World's Fastest Sharpener

The Original Speedy Sharp, with MICRO 100 Super Carbide, is the world's fastest and most versatile sharpener and it will never wear out!

It's compact and fits in you pocket, toolbox, or hunting pack. Quickly sharpen and hone anything with an edge from knives (even serrated knives), clippers, axes, fish hooks, sissors, gardening tools AND more!

(800) 920.3094 | [speedysharp.com](http://speedysharp.com)



**BOOTH 419-421  
CEP/CONSTRUCTION ELECTRICAL PRODUCTS**  
 » CEP's new LED String Lights have high-impact polycarbonate lenses and a Wet Locations listing. It comes in two options: a 20-foot drop light with a feed-through connector or a 50-foot String Light with a feed-through connector and five total fixtures spaced 10 feet apart. Both are made with 18/2 SJTW cable.  
[www.cepnow.com](http://www.cepnow.com)



**BOOTH 739-741  
PORTER CABLE**  
 » Porter Cable's new 20V MAX\* Lithium-ion brushless drill/driver (PCK607LB) and 20V MAX\* Lithium Ion brushless impact driver (PCK647LB), part of the new EDGE family of tools, will operate on any Porter Cable 20V MAX\* Lithium-ion battery. The two-speed drill/driver delivers up to 370 max watts out. The impact driver generates 1,400 inch-pounds of maximum torque.  
[www.portercable.com](http://www.portercable.com)



**BOOTH 1334-1337  
SIMPSON STRONG TIE**  
 » Simpson Strong-Tie's SDWS Framing screw is a multipurpose fastener designed and load-rated for replacing nails in framing and remodeling applications. This versatile fastener offers a new alternative to 16d, 10d and 8d nails in areas too constrained for hammers or where superior holding power and pull-out resistance is needed.  
[www.strongtie.com/sdwsframing](http://www.strongtie.com/sdwsframing)

# WE'RE HEADING TO THE MILE-HIGH CITY IN 2017

Save the date and join your colleagues next year for:

- Networking
- Professional Development
- Great Panels and Presentations from Industry Thought Leaders



**ISA ANNUAL CONVENTION  
APRIL 22-24, 2017**

Denver Convention Center  
Hyatt Regency | Denver, Colorado

[isaconvention.org](http://isaconvention.org)

## POWER UNPLUGGED

### DRILL-POWERED HYDROSTATIC TEST PUMP

- Lightweight, portable and cordless, this easy-to-use pump gets its power from a separate drill.
- Requires 1/2" electric or cordless 18 volt or higher drill with 1500 RPM recommended (not included).
- 15' High Pressure Output Hose (included) has quick disconnect feature.



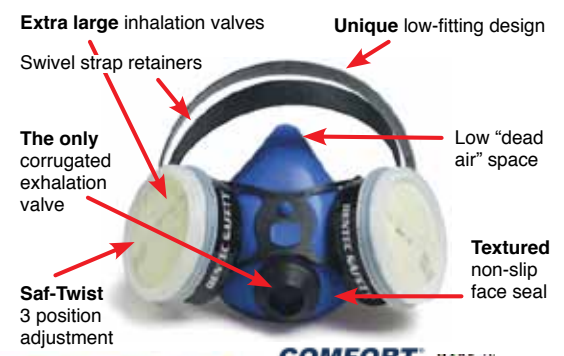
**DPHTP500**  
1.3 gpm and 500 psi max



PIPE TOOLS & VISES  
SINCE 1896

Reed Manufacturing Company  
Erie, PA USA • [www.reedmfgco.com](http://www.reedmfgco.com)

## Contrary to popular belief ... there is a better respirator!



*Jim,  
I think that the 3 position cartridge adjustment is unique. I've never seen anything like it. Let's contact Dentec.  
THX Jane*

**COMFORT AIR** MADE IN THE USA  
 Available in 3 materials: Silicone, Thermoplastic and Elastomeric rubber. One to fit your application or budget. A total of 8 sizes available ensuring a proper fit.

**Contact us to see if you qualify for a GTO (guaranteed trial offer) or visit our web site!**  
**1-888-533-6832**  
[www.dentecsafety.com](http://www.dentecsafety.com)



Training Support



Specializing in safety solutions



**BOOTH 846-848  
UNITED ABRASIVES/SAIT**

» The Ultimate Ceramic cutting wheel by United Abrasives/SAIT is the latest addition to the Premium Performance product line. This .045-inch cutting wheel is made with premium ceramic aluminum oxide grain and is exceptionally long lasting on carbon steel, stainless steel and hard-to-cut alloys. It is made in the USA.

[www.unitedabrasives.com](http://www.unitedabrasives.com)



**BOOTH 1629  
PFERD USA**

» PFERD now offers a wide range of large-diameter cut-off wheels with heavy reinforcement and concentration of premium abrasive grain for use on portable gas saws and electric chop saws. These versatile wheels are ideal for well-drillers working ductile iron casings and soil pipes to concrete salvage saw blades for cutting a variety of on-the-job materials. They are available in 12-, 14- and 16-inch diameters.

[www.pferdusa.com](http://www.pferdusa.com)

**BOOTH 501-503  
OMER**

» OMER is meeting customer requests for a factory-made, state-of-the-art 16-gauge wide-crown clinching tool with the new Wide Crown stapler. This tool drives and clinches over the legs of a full one-inch wide staple, and features an anvil underneath for triple-wall cardboard and other applications.

[www.omertools.com](http://www.omertools.com)



**BOOTH 954  
NORSEMAN DRILL AND TOOL**

» Norseman announces the Combination Drill & Tap (Type 40-AG). Made from hi-molybdenum steel to ensure longer tool life, it features a self-centering split point that provides excellent drilling precision and accuracy. Combination drill and taps are ideally suited for on-site tapping in construction, maintenance and repair, assembly and production environments.

[www.norsemandrill.com](http://www.norsemandrill.com)



**GO TO** » Get fresh New Products every day at  
[www.ContractorsSupplyMagazine.com](http://www.ContractorsSupplyMagazine.com)



**BOOTH 518-520  
SARGE KNIVES**

» Whether you're enduring the blistering desert sun or bundling up for the snowy slopes, Sarge Desert Cups will retain beverage temperature for hours in any climate. The 20- and 30-ounce cups feature double-wall vacuum insulation that retains hot beverage temperatures up to 12 hours and cold beverage temperatures up to 24 hours while ensuring a sweat-proof surface. Optional laser-engraving is also available.

[www.sargeknives.com](http://www.sargeknives.com)

**HELP YOUR CUSTOMERS THINK  
OUTSIDE THE 'BIG BOX'!**



**MANUFACTURER & MASTER DISTRIBUTOR**



**The Brush Man, LLC**  
602 W. Hickory  
Mahomet, IL 61853  
PH: 800-274-6898  
FX: 800-274-3369  
sales@brushman.com  
www.brushman.com



**STAFDA BOOTHS 818 - 820**



#### BOOTH 245 SCENIC ROAD MANUFACTURING

» Proudly made in the USA, Scenic Road Wheelbarrows are designed to meet the rigorous daily needs of today's tradesmen. Each wheelbarrow features top-quality steel parts, extra-thick handles made from top-grade American ash and under-carriages built with heavy structural steel. Models include 7- and 10-cubic foot models in single- or double-wheel versions with four different tire tread options.  
[www.scenicroadproducts.com](http://www.scenicroadproducts.com)



#### BOOTH 418-422 FASCO AMERICA

» Fasco's SubLoc Pro Scrail fasteners, developed by the BECK Fastener Group, have recently been approved by Norbord Inc. for installing its Pinnacle, TruFlor, PointSIX, Durastrand PointSIX, Stabledge, Rimboard subfloor panels and SteadITred stair tread panels. SubLoc Pro Scrail fasteners are also now approved for Huber Engineered Woods' AdvanTech flooring panels. With head pull through values more than 10 percent higher and withdrawal values that are more than 40 percent higher than ring shank nails, SubLoc Pro Scrail fasteners are proven to be a premier product for building professionals.  
[www.fascoamerica.com](http://www.fascoamerica.com)



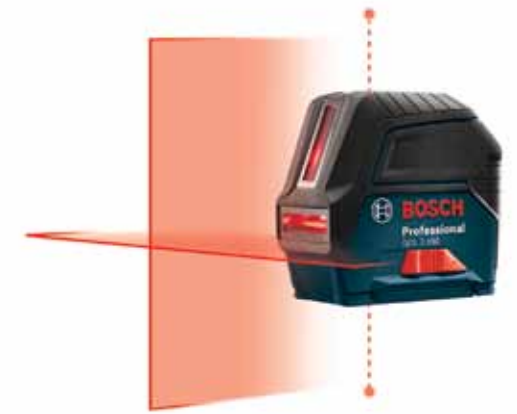
#### BOOTH 763-765 FESTOOL

» Festool has just introduced the DW 18, a high-speed, 18v, collated drywall gun. The DW 18 is equipped with a magazine attachment for using commonly available collated screws, on-demand push and drive system (no need to hold the trigger), electronic cut-off, precision depth control, a user-serviceable magazine and an EC TEC brushless motor.  
[www.festoolusa.com](http://www.festoolusa.com)



#### BOOTH 1418-1420 AERVOE INDUSTRIES

» In 1971, Aervoe invented upside-down marking paint. Today, Aervoe is at it again with the new LiquidPro Marking System, which uses a peristaltic pump instead of propellant or compression. Instead, paint is drawn from the Paint-In-A-Bag cartridge and dispensed like an aerosol can. Because the cartridge is clear, users can see how much is left, which cuts down on waste.  
[www.aervoe.com](http://www.aervoe.com)



#### BOOTH 1318-1329 BOSCH TOOLS

» The Bosch GCL 2-160 Self-Leveling Cross-Line Laser with Plumb Points is an all-in-one unit that offers a high-visibility cross-line with two up/down laser points. The lines and points can be turned on independently or together for horizontal level, vertical level and plumb transfer applications. It features a visible range of 65 feet and accuracy of +/-1/8 inch.  
[www.boschtools.com](http://www.boschtools.com)



#### BOOTH 318-320 SNAP-ON INDUSTRIAL

» The Williams Wireless Borescope makes it easy to examine engines and other machinery both inside and out. It has a lightweight, handheld design and wireless connectivity for transmitting still images and video without hassle. It has a detachable 3.5-inch thin film LCD monitor and a flexible 3/8-inch lens tube that measures three feet long.  
[www.snaponindustrialbrands.com](http://www.snaponindustrialbrands.com)

#### BOOTH 235-237 METABO

» Metabo's new SE 18 LTX line of cordless drywall screw guns feature an adjustable depth guide that allows precise screw head recess setting for accurate and easy finishing. The SE 18LTX 2500 is for residential projects, the SE 18LTX 4000 is for residential and commercial work and the SE 18LTX 6000 is best suited for commercial jobs with metal studs.  
[www.metabousa.com](http://www.metabousa.com)



#### BOOTH 1634-1636 RIDGID

» The Ridgid 21-degree 3 1/2-inch round head framing nailer is a perfect combination of power, weight and speed. Its powerful motor drives 3 1/2- by 0.148-inch (16d) framing nails into the hardest engineered lumbers. A dry-fire lockout extends motor life, prevents misfires and marring. An overmolded handle and trigger interlocks with the magnesium metal housing for maximum durability. This tool is also backed by Ridgid's industry-leading service agreement which includes free o-rings, piston stops and driver blades for life.  
[www.rigid.com](http://www.rigid.com)



#### BOOTH 526-528 BRASS KNUCKLE

» Pros on the job need comprehensive protection from wetness, debris, sun — even temporarily impaired vision when your eye protection fogs up. With that in mind, Brass Knuckle has created the Vader Combo, a splash goggle with integral face shield that combines full-face impact and wetness protection with unparalleled anti-fog properties. The unit is 99.9 percent UV-protection rated for outdoor wear.  
[www.brassknuckleprotection.com](http://www.brassknuckleprotection.com)

**GO TO** Get fresh New Products every day at  
[www.ContractorsSupplyMagazine.com](http://www.ContractorsSupplyMagazine.com)