



# WOC FOR THE RECORD



The World of Concrete returns to the Las Vegas Convention Center Jan. 17-20, 2017, with hopes of repeating its seven-year high performance for the third year in a row. The 2016 show hit a seven-year-high of 60,110 attendees, up from 55,779 in 2015, which itself was the event's best showing in seven years. Last year, 1,532 companies used 744,000 net square feet of space, which sets the bar higher this year.

However, 2017 (March 7-11) also marks the return of ConExpo-Con/Agg to Las Vegas. Some companies end up choosing one or the other according to their equipment needs and that may impact this year's show.



Once again, the World of Concrete's educational roster includes over 100 courses covering the gamut of concrete business practices and application specialties. In addition, the Concrete Sawing and Drilling Association (CSDA) will present five courses this year too.

Returning focus areas in 2017 include The Producer Center, Material Handling, Concrete Repair & Demolition, World of Masonry, Technology for Construction, Precast and Concrete Surfaces & Decorative.



**JAN. 17-20, 2017**  
LAS VEGAS CONVENTION CENTER

**SHOW SCHEDULE**

**MONDAY, JAN 16**

Education programs only

**TUESDAY-THURSDAY, JAN 17-19**

Exhibits: 9:30 a.m. - 5:00 p.m.

Seminars: 8:00 a.m. - 5:00 p.m.

**FRIDAY, JAN 20**

Exhibits: 9:00 a.m. - 12:00 p.m.

Seminars: 8:00 - 11:00 a.m.

Two new sections are launching in 2017, Concrete Masonry and Concrete Reinforcement, both in the North Hall. Concrete Masonry showcases products for the producers of concrete masonry; block, retaining walls, veneer, slabs and pavers. Concrete Reinforcement features bending, cutting, straightening and fabricating machinery.

Learn more about the show agenda and educational tracks and register at [www.worldofconcrete.com](http://www.worldofconcrete.com).

CONTINUED ON PAGE 40



**Make constructing temporary walls quick, simple & affordable.**

With the locking head & micro-adjust handle of **Dust Shield PRO™** extendable poles, constructing containment areas has never been easier. Combine with self-adhesive **Zip N Close®** zippers to create secure, instant access & protect the job with tools that deliver the performance you demand & are **tougher than the jobsite.™**

[surfaceshields.com](http://surfaceshields.com)

© 2016 Surface Shields, Inc. All rights reserved. Trademarks property of Surface Shields, Inc. where applicable.

**SURFACE PROTECTION  
DUST CONTAINMENT  
ADHESIVE TAPES**



**TOUGHER  
THAN THE  
JOBSITE.™**

**WORLD OF CONCRETE  
NEW PRODUCTS**



**BOOTH O-31965  
SKILSAW**

» The MEDUSAW is the first worm drive concrete saw that delivers a complete concrete cutting system with legendary SKILSAW worm drive power and durability. The MEDUSAW features GFCI protection and an integrated wet/dry dust management system to control dust for cleaner cuts. Its Cut-Ready adjustable plunge lock allows users to quickly and accurately set and make consistent plunge cuts.

[www.skilsaw.com](http://www.skilsaw.com)



**BOOTH O-30200  
BOSCH**

» The Bosch GBH2-26 1-inch SDS-plus Bulldog Xtreme Rotary Hammer weighs only 6.4 pounds but features an upgraded 8.0-amp motor that provides outstanding performance. It delivers 2.0 foot-pounds of impact energy and 0-4,000 impacts per minute. The GBH2-26 offers 1-inch diameter capacity and three modes for maximum versatility: drilling only, hammer drilling and chiseling. The user can optimize the chiseling angle with Vario-Lock positioning. A pistol-style, ergonomic handle with a soft-grip provides superior user comfort.

[www.boschtools.com](http://www.boschtools.com)



**BOOTH S-13251  
AERVOE INDUSTRIES**

» In 1971 Aervoe Industries invented upside-down marking paint. Now its new LiquidPro marking system uses a patented propellant-free system to dispense marking paint. The LiquidPro marking system uses a peristaltic pump to paint from an Aervoe Paint-In-A-Bag cartridge to dispense it like an aerosol can. Because there is no propellant and the cartridge is not pressurized, it is safer to ship and store than aerosol forms. The clear cartridge also showed how much paint is left to use.

[www.aervoe.com](http://www.aervoe.com)



**BOOTH O-31806  
WACKER NEUSON**

» Wacker Neuson's newest motors that are part of the popular HMS flex shaft vibration system are backed by a two-year warranty. The new "M" motors, M1500 and M2500, combined with a variety of heads and shafts, provide optimum concrete consolidation for every type of application. The M1500 and M2500 electric motors are lighter than previous models and offer extremely long service life with carbon brushes that last up to 500 hours and double-insulated construction.

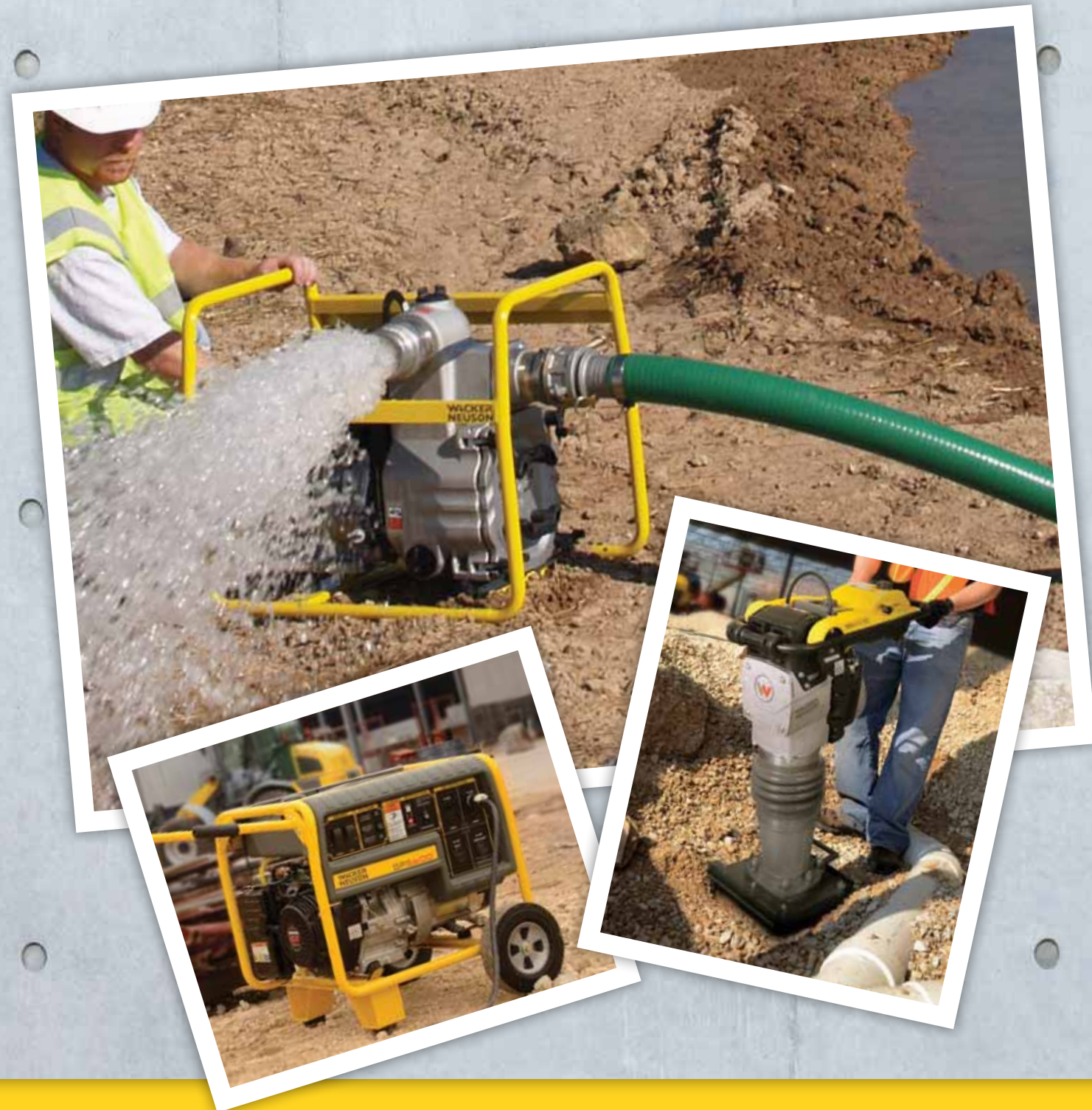
[www.wackerneuson.com](http://www.wackerneuson.com)



**BOOTH S-12019  
TRIMACO**

» Trimaco's patent-pending E-Z Up Dust Containment Pole works with plastic sheeting to create a dust barrier without tape on the job site. It features a twist lock design and a quick clip for easy setup. The bottom spring action and unique non-slip foot pedal ensures a snug fit. These heavy-duty aluminum poles are available in 12-, 16- and 20-foot heights. Each pack contains two poles.

[www.trimaco.com](http://www.trimaco.com)



**Equipment that pays off!**

Wacker Neuson has a large selection of equipment with in-store appeal all backed by our leading sales, marketing and service support team. Known for its job site performance and reliability, the Wacker Neuson brand has a solid reputation that will keep your customers coming back for more and improve your bottom line.

[www.wackerneuson.com](http://www.wackerneuson.com)



**WACKER  
NEUSON**

*all it takes!*

**WORLD OF CONCRETE  
NEW PRODUCTS**



**BOOTH C-6703  
ZIPWALL**

» ZipWall introduces the self-closing ZipWall Magnetic Dust Barrier Door Kit. Ideal for contractors, the ZipWall Magnetic Dust Barrier Door provides a hands-free entryway into the job site while keeping dust contained. It is quick and easy to install with an adjustable header bar that works with all ZipWall spring-loaded poles. Specially-designed magnetic strips snap together to attach the magnetic door to the barrier material, forming an airtight seal.

[www.zipwall.com](http://www.zipwall.com)



**BOOTH S-11650  
CEP CONSTRUCTION  
ELECTRICAL PRODUCTS**

» LED String Lights from CEP are available in a 20-foot version with a feed-through connector for daisy-chaining or a 50-foot string with with a feed-through connector and five lights spaced 10 feet apart. Manufactured with high-impact polycarbonate lenses and a Wet Locations listing, these have the durability to last multiple jobs. With a high lumen output and low amp draw, these lights can be strung down long corridors, hallways, stairwells or work areas with minimal circuits required.

[www.cepnow.com](http://www.cepnow.com)

**BOOTH S-11509  
HUDSON MANUFACTURING**

» The Constructo Extreme Curing Compound Sprayer from H.D. Hudson Manufacturing Company boasts Spray Thick technology that allows it to spray up to 35-percent solids. The heavily galvanized steel tank is epoxy-coated inside and out to resist harsh chemicals and prevent rust. The tank is also ribbed for added strength against dents and dings. A chemical-resistant hose and Viton Extreme seals make this dependable sprayer reusable again and again with the harshest of chemicals.

[www.hdhudson.com](http://www.hdhudson.com)



**BOOTH O-31200  
HONDA**

» The Honda EB2800i industrial Open Frame Inverter (OFI) generator weighs less than 67 pounds yet provides up to 2,800 watts of power for small compressors, fans, large concrete drills, concrete vibrators, circular saws and battery chargers. It complies with current OSHA and LA-ETL regulations and features GFCI receptacles.

[www.powerequipment.honda.com](http://www.powerequipment.honda.com)



**BOOTH O-32051  
HITACHI**

» The new 1 1/8-inch model DH28PFY SDS-Plus rotary hammer from Hitachi Power Tools delivers an 8-amp motor that produces a formidable 2.5 foot-pounds of impact energy and features User Vibration Protection (UVP). Hitachi's patented UVP technology implements an internal counterbalance to significantly reduce vibration transfer to the user.

[www.hitachipowertools.com](http://www.hitachipowertools.com)

**Pneu-FAST**  
America's Premium Nails™

**NEW! GREEN  
CONCRETE  
NAILS**



For ACQ-treated "bottom plate" lumber! Heat-treated for strength! Tri-Coat Hi-Galv™ for corrosion resistance!

**Great Job Site Value that Improves Productivity!**

*Pneu-Fast's Green Concrete Nails fit all 30-34-degree nailers and also come in 28-degree configuration!*

*New Thru-n-Thru™ heat treated steel for unbeatable strength! Plus Pneu-Fast's exclusive Tri-Coat Hi-Galv™ for triple protection against corrosion! Designed exclusive for "green" (recently poured) concrete!*

- **Fastens bottom-plate lumber faster and easier than conventional fasteners!**
- **Tri-Coat Hi-Galv™ for triple corrosion protection in ACQ-treated lumber!**
- **Full-through heat treated for maximum strength!**
- **2 1/4" x .131 size available to fit all 30° to 34° (P/N SPGCNHG) and 28° (P/N BDGCNHG) clipped head nailers!**
- **Made entirely in the USA**



**STOCK PNEU-FAST NOW! Call 847-866-8787!**

**Pneu-FAST**  
America's Premium Nails™

The No-Fail Nail™. Made only in the United States. 2200 Greenleaf Ave., Evanston, IL 60202 (847) 866-8787 [www.pneufast.com](http://www.pneufast.com)  
© 2016 The Pneu-Fast Co. Pneu-fast name and logo are registered trademarks of the Pneu-Fast Co.



**BOOTH O-30508  
FISKARS**

» The Fiskars team spent two-and-a-half years developing the IsoCore shock reduction system, studying the body's interaction with hammers, graphing the speed and force of swings and recording images to better understand human motion. IsoCore hammers, club hammers, sledge hammers and mallets transmit four times less vibration than wood-handled striking tools. IsoCore tools are offered in a variety of sizes and styles for most major construction specialties.

[www.fiskars.com](http://www.fiskars.com)

**BOOTH S-12027  
KRAFT TOOL**

» Kraft Tool's patented cork handle is designed for improved functionality and reduced user fatigue. Slightly curved with a wider back, the handle fits the hand naturally for a comfortable grip while the natural moisture-absorbent properties of cork keep it feeling dry. It is offered on Kraft Elite Series Five Star finishing trowels and the new Elite Series Xtreme Flex Finishing Trowel and Mag hand float.

[www.krafttool.com](http://www.krafttool.com)



**BOOTH C-4555  
LACKMOND PRODUCTS**

» The new Beast Pro Turbo Mesh Porcelain Tile Blade incorporates the most advanced technology available. It is designed with a unique rim that aids in cooling the blade, resulting in longer blade life and clean, fast cutting, and is engineered with a thin-kerf cutting edge to minimize chipping. Ideal for use in the hardest porcelain tiles, and also performs well in softer ceramic or natural stone tiles.

[www.lackmond.com](http://www.lackmond.com)



**WORLD OF CONCRETE  
NEW PRODUCTS**



**BOOTH O-30668  
DEWALT**

» The DEWALT 20V MAX\* Red Rotary Tough Laser, model DW079LR, is a dual-slope laser +/- 10 percent that features an IP67 debris/water resistance and two meters of drop protection. The DW079LR Red Rotary Laser also provides accuracy of +/- 1/16" at 100 feet. This laser has an interior range of 250 feet or an exterior range of 2,000 feet with the use of a detector. Included with the DW079LR is a 12V MAX\*/20V MAX\* charger, 2-Ah 20V battery, detector, ceiling bracket, laser enhancement glasses, target card and remote control.

[www.dewalt.com](http://www.dewalt.com)



**BOOTH C-6879  
DICA USA**

» DICA FiberMax Dunnage pads provide an exceptionally lightweight and rigid foundation for outrigger-enabled equipment, including concrete pumps and mobile cranes. The pads are unaffected by the elements or prolonged use. Unlike wood, they won't rot, delaminate, rust, decompose or absorb water. Heavy Duty and Super Duty Dunnage pads are available in both single- or multi-pad configurations.

[www.dicausa.com](http://www.dicausa.com)

**WORLD OF CONCRETE  
NEW PRODUCTS**

**BOOTH N-1153  
JAACO CORPORATION**

» JAACO manufactures collated NailPro duplex nails and pneumatic duplex tools for applications including precast concrete forms, mobile and modular homes, temporary wood scaffolding, wood blocking for flatbed trucks and rail cars and prehung doors. Fasteners available in 15-degree wire coil and 21-degree plastic strip collations.

[www.jaaco.com](http://www.jaaco.com)



**BOOTH N-2056  
MORTAR NET SOLUTIONS**

» The DriPlane drainage plane for exterior rainscreen systems is designed for use between the inner structural wall and exterior cladding and is ideal for stucco, thin brick and stone, fiber cement, vinyl and wood siding, manufactured stone and most other absorptive claddings. The easy-to-install system helps prevent peeling, cracking or blistering.

[www.mortarnet.com](http://www.mortarnet.com)



**BOOTH S-11955  
L.B. WHITE**

» The L.B. White Company, Inc. introduces the propane-fueled Tradesman 125 portable forced air heater. The Tradesman 125 features a steel combustion chamber and burner plate for utmost durability, an auto shut off circuit to protect against overheating and a continuous electronic spark ignition system. The Tradesman 125 has an output range of 70,000 to 125,000 Btu/h.

[www.lbwhite.com](http://www.lbwhite.com)

# BUILT TOUGH FOR THE DAILY GRIND

Since 1977, Sunex has been providing solutions for the working professional. We offer impact sockets, lifting equipment, hand tools, air tools, tool storage, and USA made hydraulic presses. Sunex products are trusted for their design and engineering to withstand the demands of the workplace, day after day. We will continue to equip our customers with high quality tools at the best value...guaranteed.

## SUNEX TOOLS

[www.sunextools.com](http://www.sunextools.com)

PROVIDING WORKPLACE SOLUTIONS

**WORLD OF CONCRETE  
NEW PRODUCTS**



**BOOTH S-12846  
MAKINEX**

» The Makinex Hose 2 Go is a constant pressure water supply unit ideal for use as a dust suppression, blade cooling tool and portable water supply. The Hose 2 Go has a constant flow of water that allows the user to suppress dust and keep your blade cool while cutting, core drilling and grinding concrete. It provides a constant water flow without the use of a pump, battery or electronics. A full unit will give the user up to 30 minutes of constant flowing water at up to nine psi.

[www.makinex.com](http://www.makinex.com)

**BOOTH N-2168  
KESON INDUSTRIES**

» Keson introduces two new USA-made chalk line reels. The model K3X is a 3x rewind chalk line reel with a standard line. The model K3XPRO (shown) is a 3x rewind ABS and metal chalk line reel with a precision line. These two models are the only chalk line reels in the American market that are made in the USA. Both have Keson's Big Mouth sealing grommets for convenient and spill-free refills. These chalk line reels join Keson's best-selling Giant and Little Giant chalk line reels.

[www.keson.com](http://www.keson.com)



**BOOTH O-31421  
CS UNITEC**

» CS Unitec's new TwinMix 1800 portable mixing station is equipped with a material chute and integrated dust extraction port to reduce airborne dust while adding mixing components. When connected to an industrial vacuum such as the model CS 1445 H HEPA vacuum, the TwinMix 1800 provides a cleaner, safer work environment. Featuring two counter-rotating paddles — a helical rod and scraper paddle — the TwinMix 1800 thoroughly combines compounds into a homogeneous, lump-free mixture. The scraper paddle reduces material deposits on the side of the bucket and improves efficiency.

[www.csunitec.com](http://www.csunitec.com)



**BOOTH O-30135  
MAKITA**

» Makita has created a new class in cordless tools with the release of 18V LXT Sub-Compact Brushless, the most compact and lightest weight tools in the 18V category. At only 6 3/8 inches and 2.8 pounds (with 2.0-Ah battery) the model XFD11ZB 18V LXT Sub-Compact Brushless driver-drill has a variable two-speed transmission (0-500 & 0-1,700 rpm) and dual LED lights to illuminate the work area. The 18V LXT model XDT15ZB Sub-Compact Brushless impact driver has two speed settings and 1,240 inch-pounds of max torque for a full range of fastening applications.

[www.makitatools.com](http://www.makitatools.com)



**BOOTH C-6973  
SIMPSON/FNA**

» The FNA Group's Simpson brand has created the Aluminum WaterBlaster Series of commercial pressure washers to provide commercial cleaning professionals a high-quality, durable belt-drive machine. It is perfect for paint preparation, professional cleaning services, graffiti removal, commercial job sites and fleet maintenance.

[www.fna-group.com](http://www.fna-group.com)



**BOOTH C-4229  
BROKK**

» The new Brokk 280 features increased demolition power over its predecessor, includes the all-new Brokk SmartPower electrical system and incorporates additional hardened parts for extra durability in tough environments. The Brokk 280 features a 20-foot (6.2-meter) reach and weighs 6,945 pounds (3,150 kilograms). By generating as much as 25 percent more breaking performance — a combination of impact power and blow frequency — over its predecessor, the Brokk 280 delivers a significant boost in productivity.

[www.brokkinc.com](http://www.brokkinc.com)



**BOOTH C-5550  
LEICA GEOSYSTEMS**

» The Leica DS2000 Utility Detection Radar finds all potential threats, including non-conductive pipes and fiber optics, lowering the risk of accidentally hitting underground assets. Collecting twice the information in half the passes, data is collected with dual-frequency antennae that locate deep and shallow targets at the same time. With or without GPS, utilities can be located on-site with no post-processing needed.

[www.leica-geosystems.com](http://www.leica-geosystems.com)

IBS Booth  
W7039



Light gauge steel  
fastening solutions  
from ET&F.



BECK Fastener Group® and ET&F Fastening Systems® are registered trademarks of the BECK Fastener Group.

The labor-saving alternative to traditional fasteners for cold formed steel framing.

Engineers, architects, and building officials rely on code-approved drive pins from ET&F. Our commercial-grade high carbon heat-treated steel pins have ballistic points to penetrate the hardest substrates at the same speed as driving into wood. ET&F - Now part of the BECK Fastener Group.



Get professionally connected  
by visiting [www.etf-fastening.com](http://www.etf-fastening.com)  
or call 800-248-2376.

[www.etf-fastening.com](http://www.etf-fastening.com)